

# Floorplan Pack

# ONE

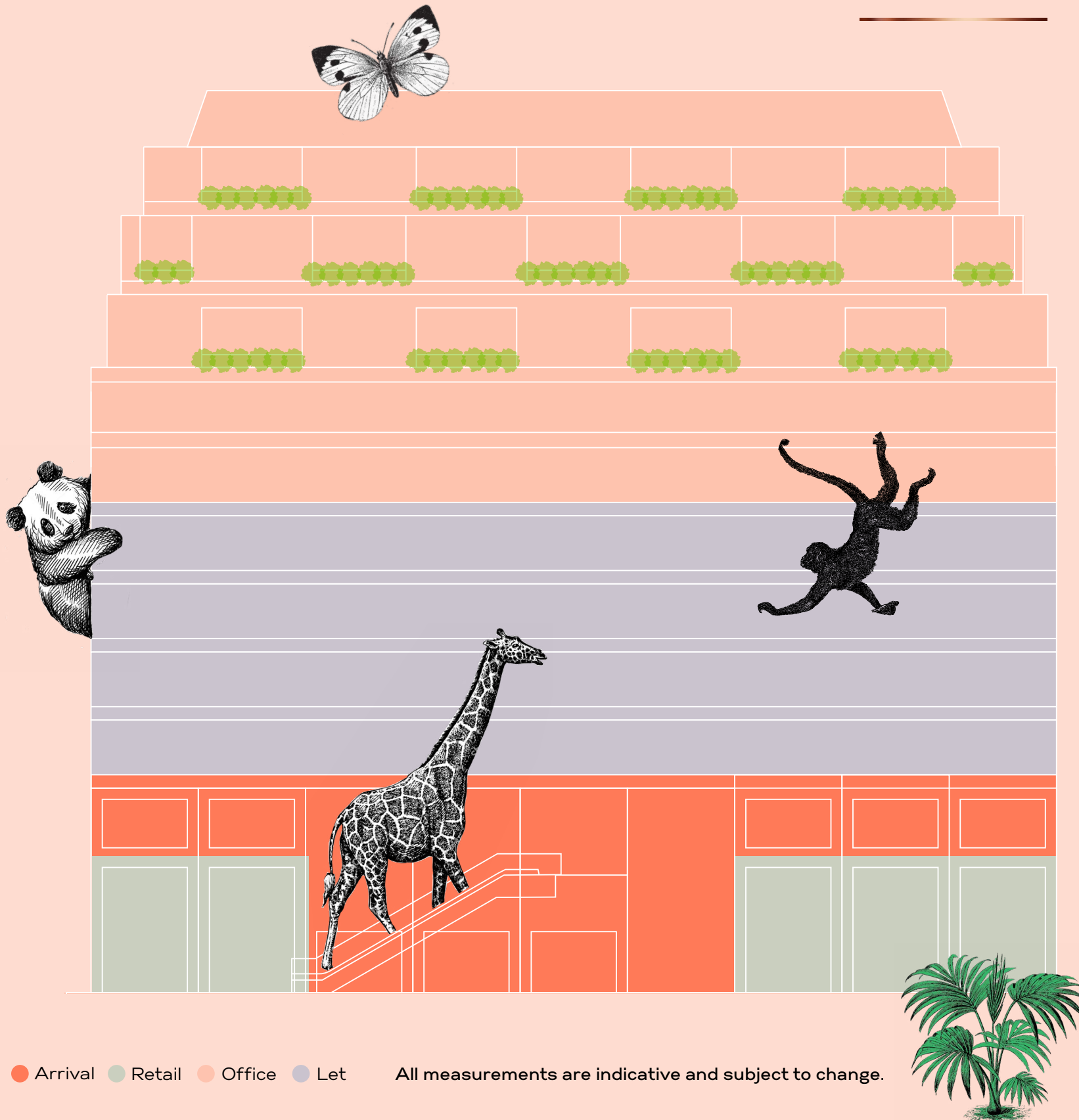
LIVERPOOL  
STREET

Arriving Q1 2026





# Schedule of Areas



| LEVEL        | NIA (sq ft)   | NIA (sq m)          | Terrace (sq ft) |
|--------------|---------------|---------------------|-----------------|
| L10          | 15,560        | 1,446               | 990             |
| L9           | 17,842        | 1,658               | 657             |
| L8           | 20,075        | 1,865               | 441             |
| L7           | 18,935        | 1,759               |                 |
| L6           | 19,570        | 1,818               |                 |
| L5           |               | Let - Dentons       |                 |
| L4           |               | Let - Dentons       |                 |
| L3           |               | Let - Dentons       |                 |
| L2           |               | Let - Dentons       |                 |
| L1           |               | Reception & Amenity |                 |
| G            |               | Reception & Retail  |                 |
| <b>TOTAL</b> | <b>91,982</b> | <b>8,546</b>        | <b>2,088</b>    |

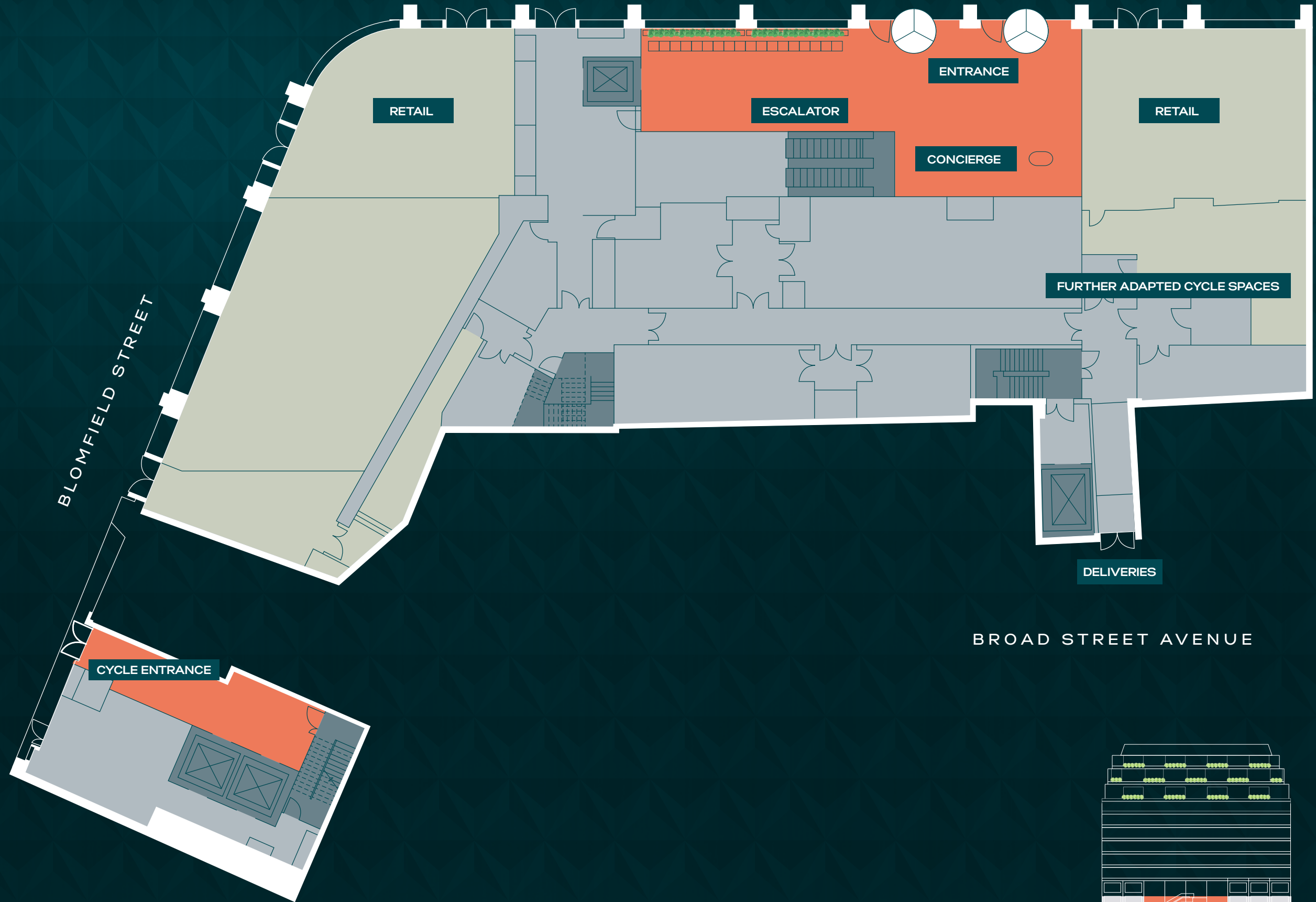
● Arrival ● Retail ● Office ● Let All measurements are indicative and subject to change.



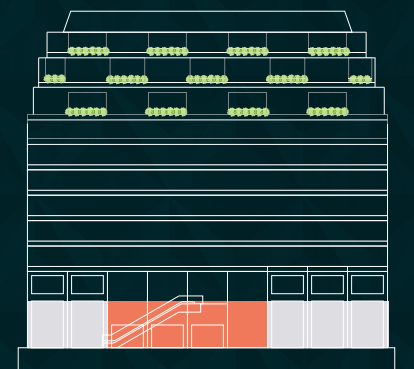
Level

G

LIVERPOOL STREET



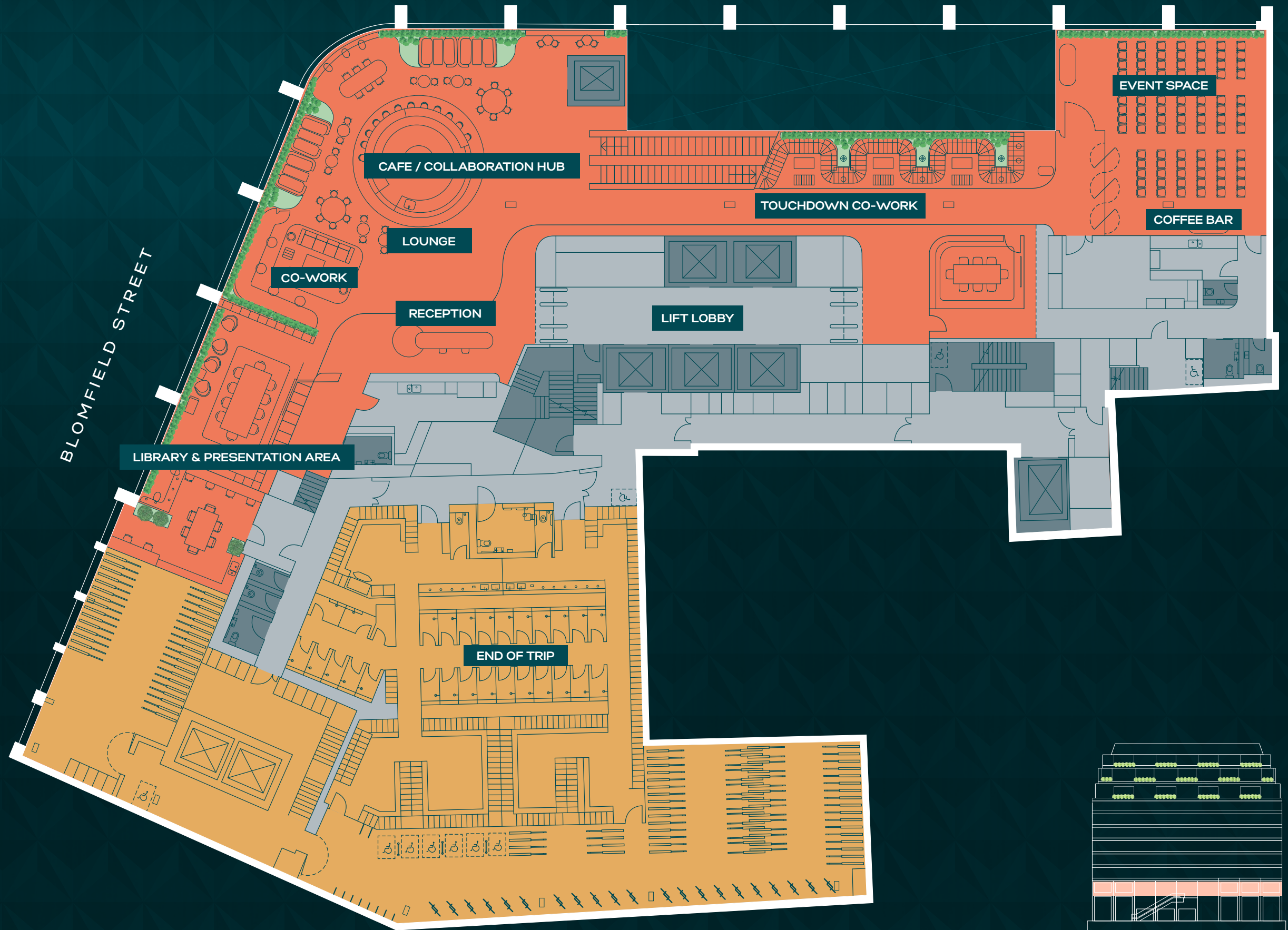
- Retail
- Arrival
- Core



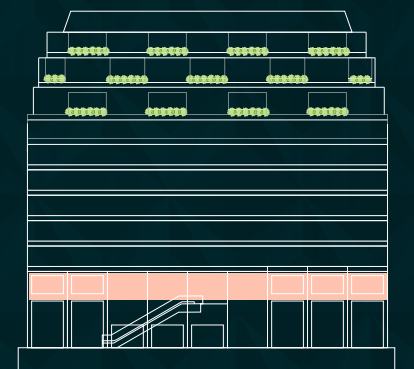
Level

1

LIVERPOOL STREET



- End Of Trip
- Reception / Amenity
- Core



LIVERPOOL STREET

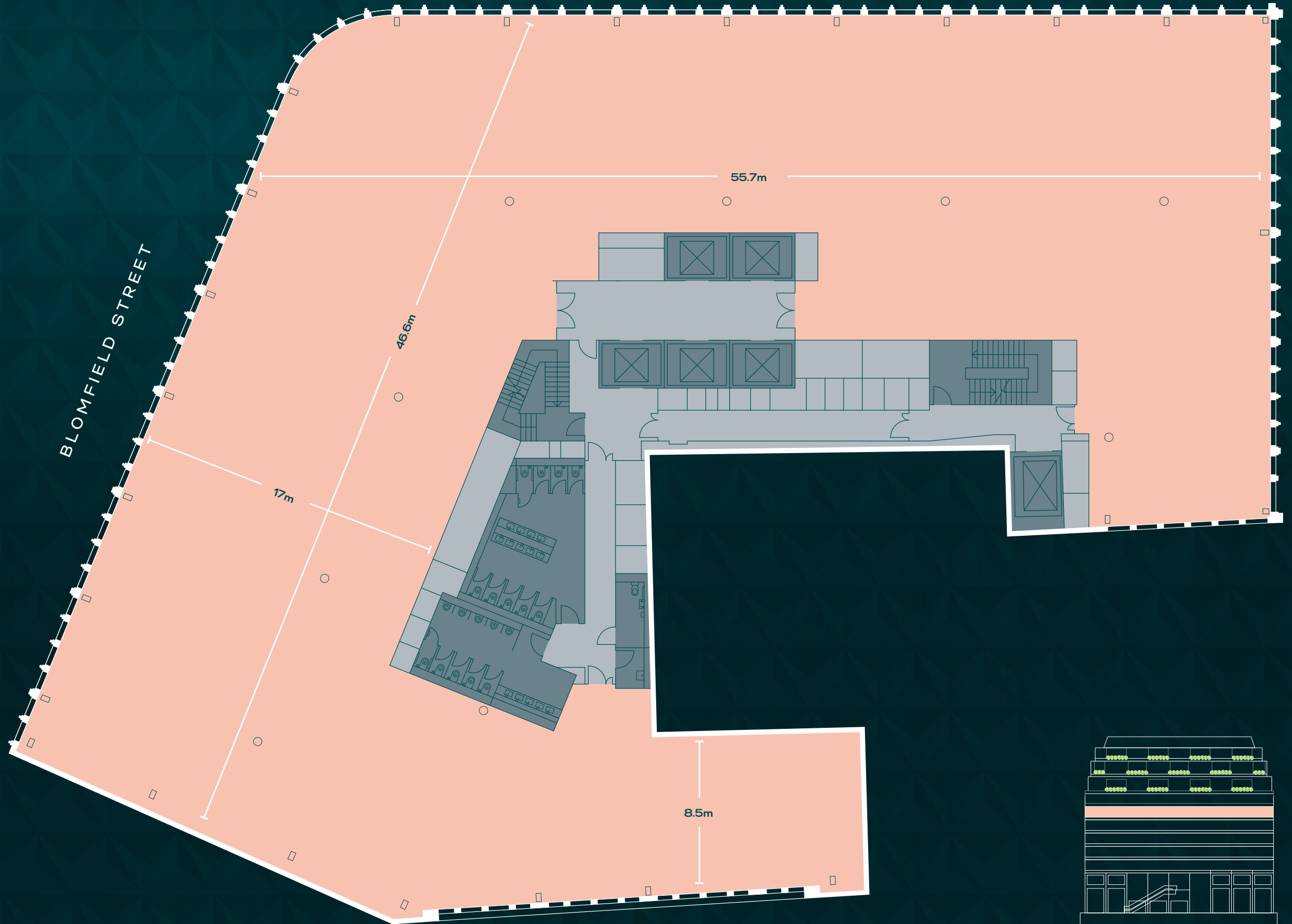


# Level

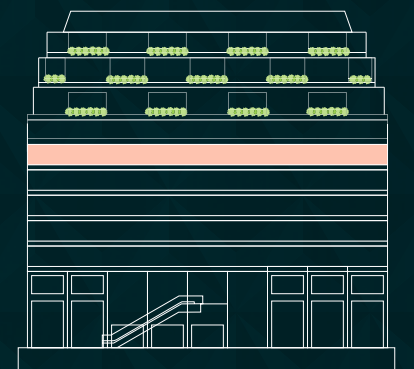
# 6

19,570 sq ft  
1,818 sq m

BLOMFIELD STREET



- Office Space
- Core

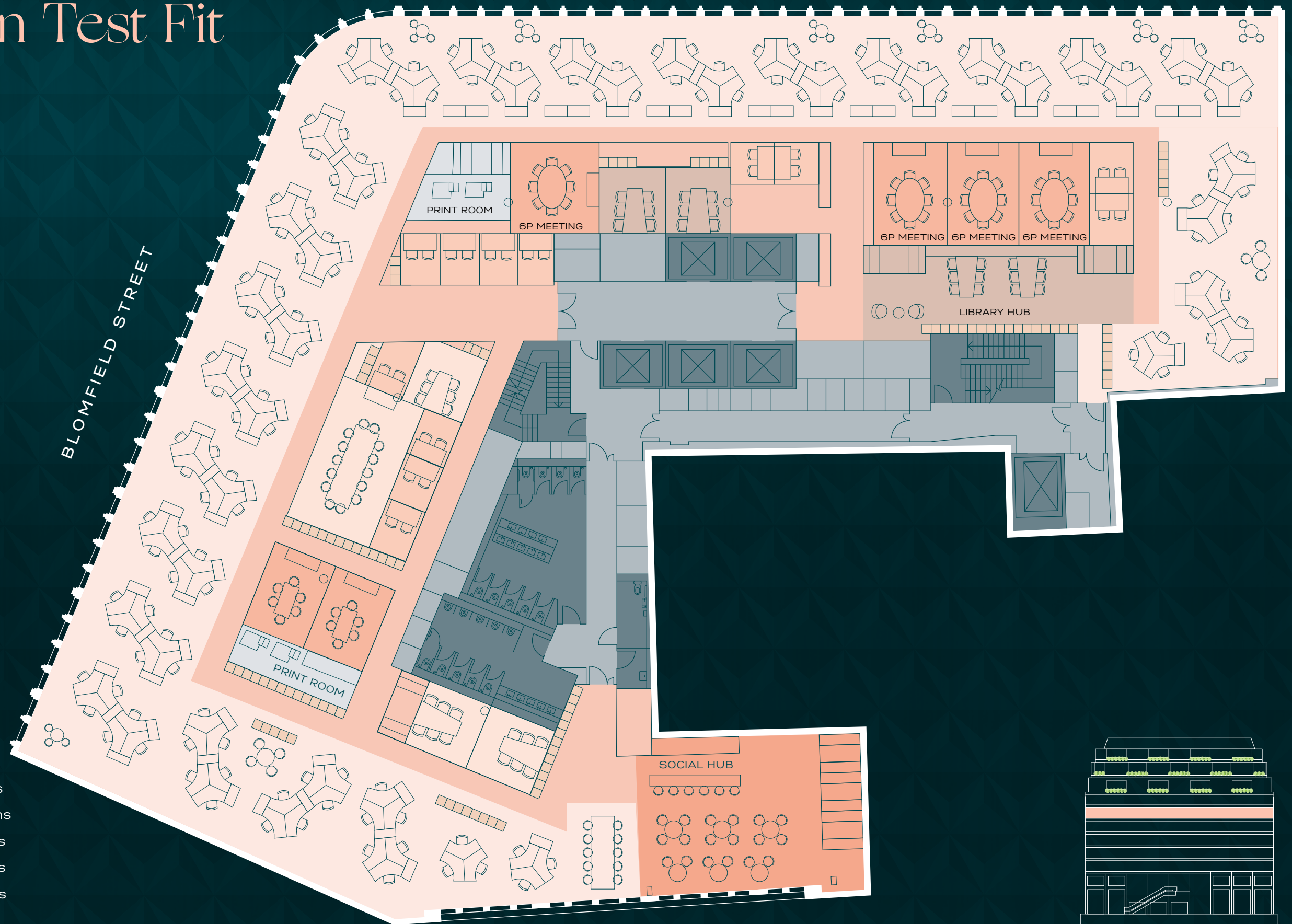




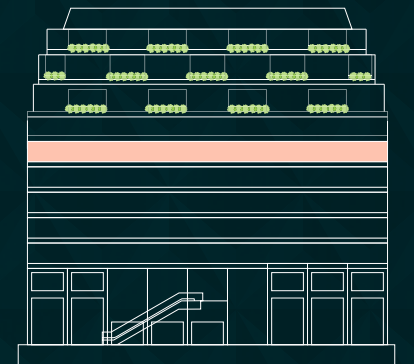
# Open Plan Test Fit



BLOMFIELD STREET



- 144 open plan desks
- 12 x 2 person drop in rooms
- 5 x 6 person team VC rooms
- 2 x 6 person meeting rooms
- 4 x 8 person meeting rooms
- 1 x 14 person meeting rooms
- Core



LIVERPOOL STREET

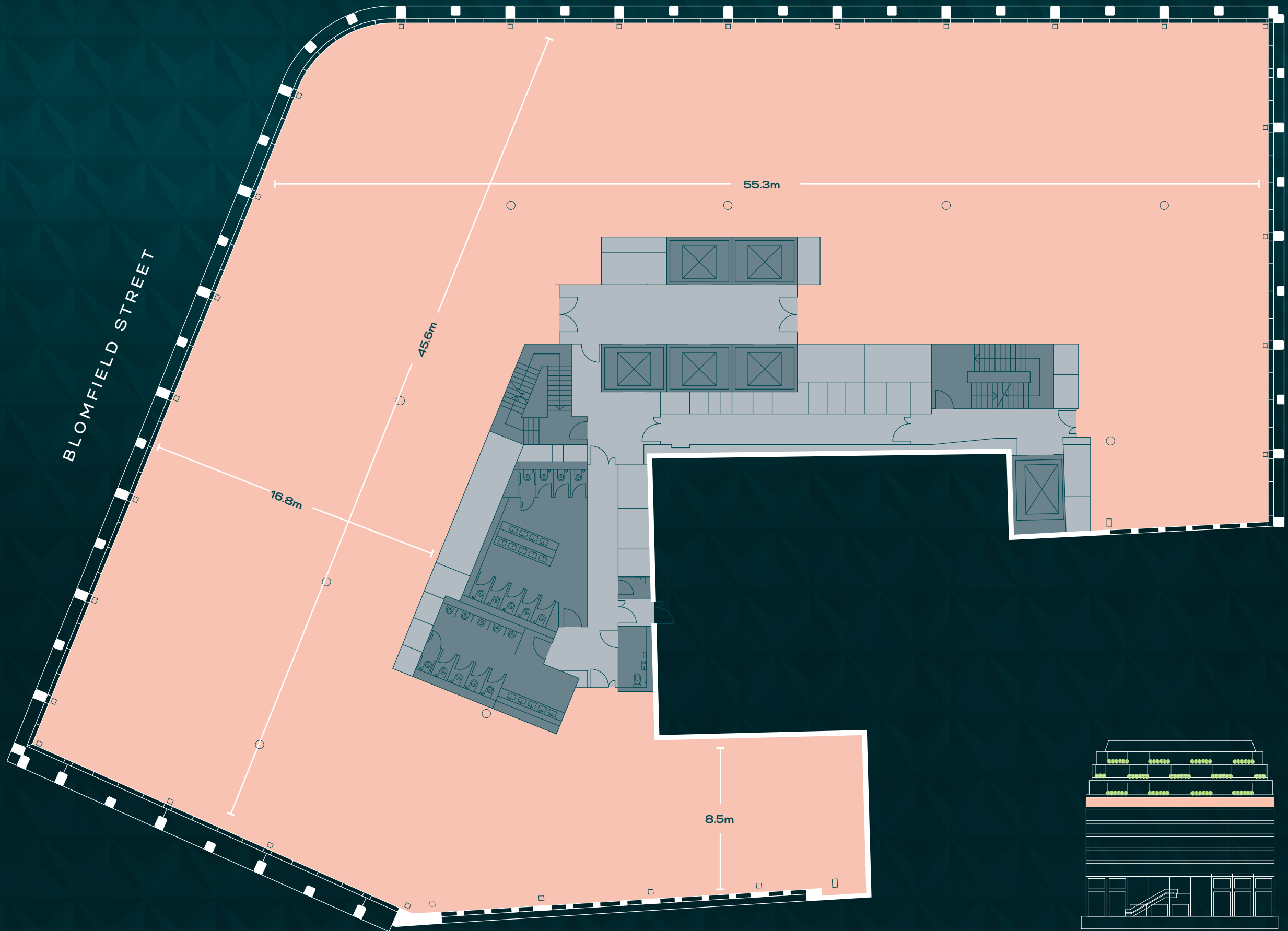


Level

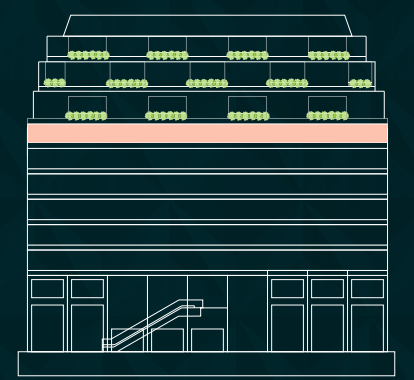
7

18,935 sq ft  
1,759 sq m

BLOMFIELD STREET



- Office Space
- Core



LIVERPOOL STREET

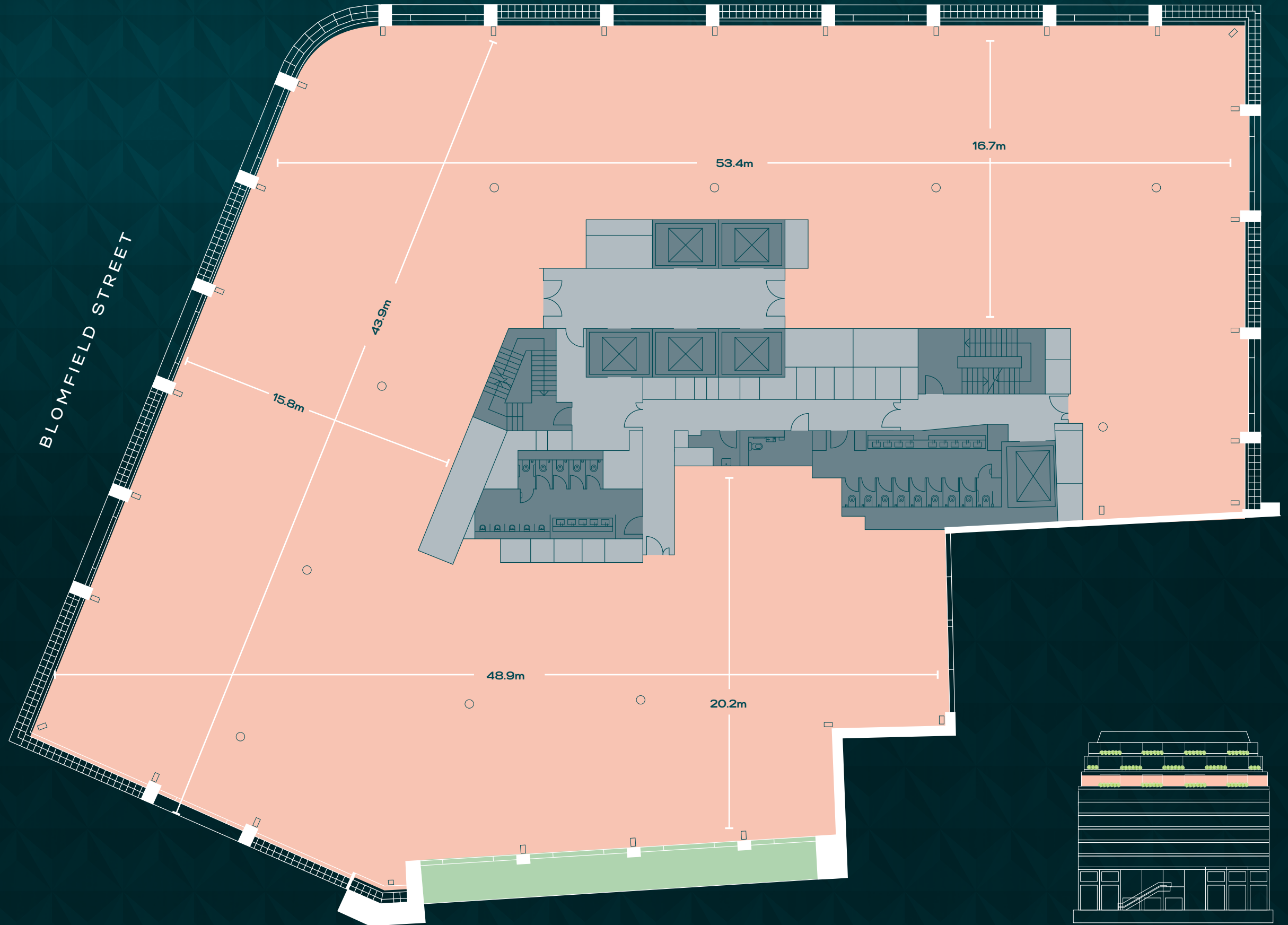


Level

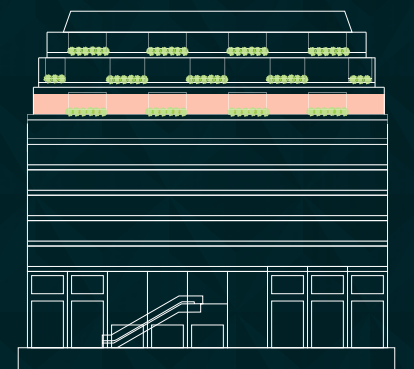
8

20,075 sq ft  
1,865 sq m

Terrace:  
441 sq ft  
41 sq m



- Terrace
- Office Space
- Core







# Level

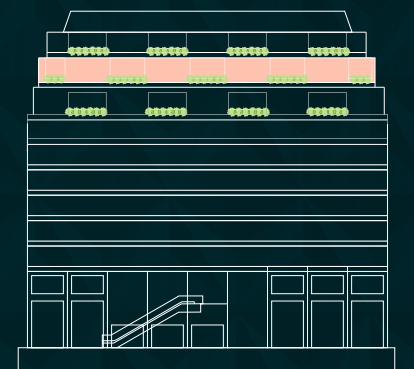


17,842 sq ft  
1,658 sq m

Terrace:  
657 sq ft  
61 sq m



- Terrace
- Office Space
- Core



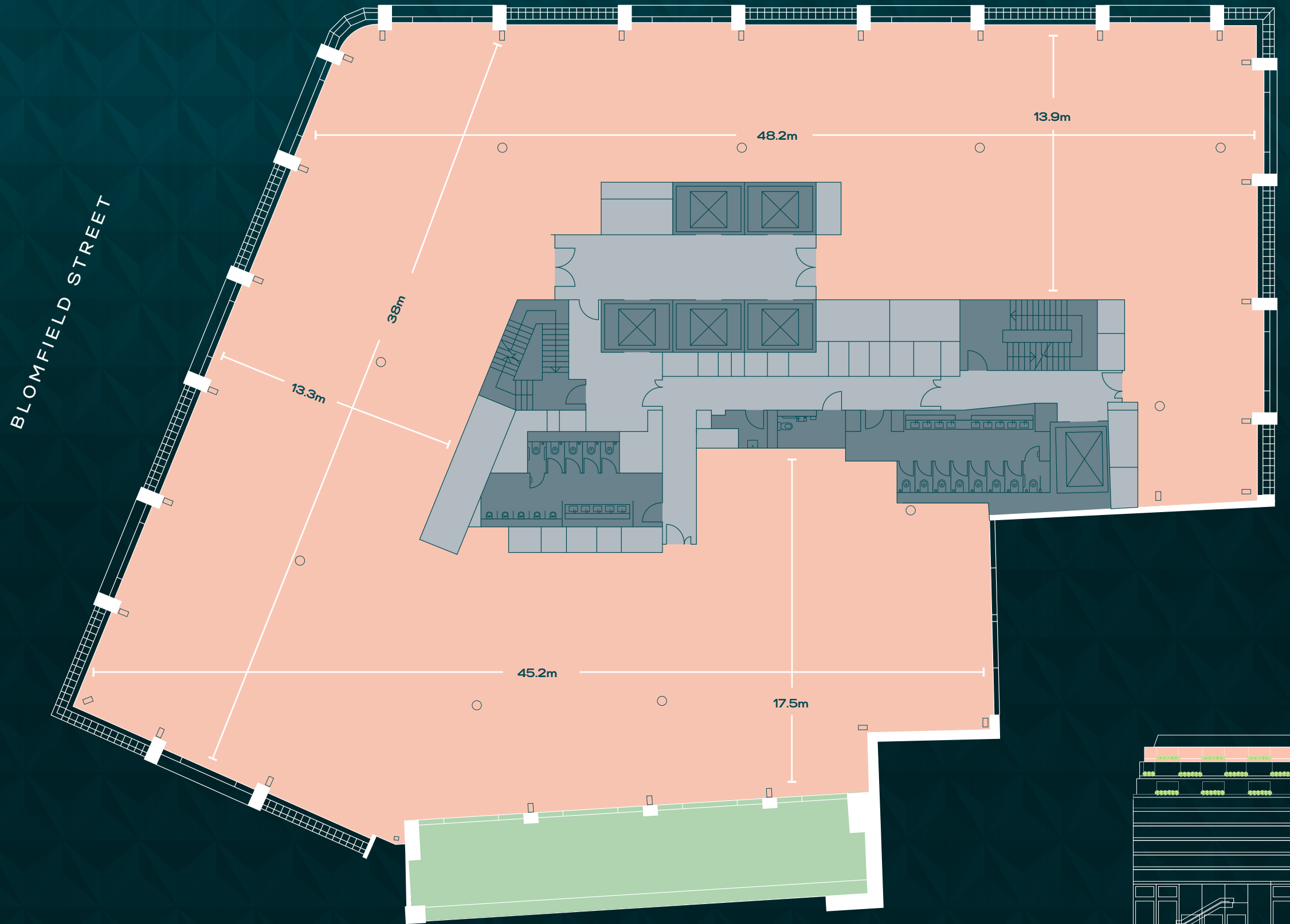


Level

10

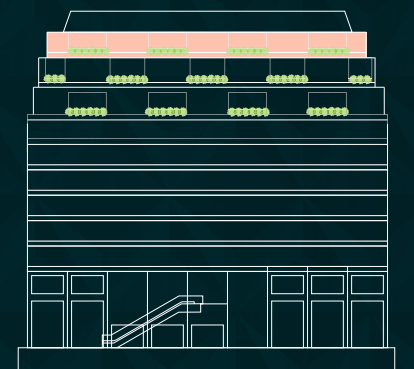
15,560 sq ft  
1,446 sq m

Terrace:  
990 sq ft  
92 sq m



BLOMFIELD STREET

- Terrace
- Office Space
- Core



# Get in Touch

---



**JEREMY ATTFIELD**

jeremy.attfield@jll.com  
+44 (0)7703 234 261

**FREDDIE MACGREGOR**

freddie.macgregor@jll.com  
+44 (0)7872 107 539

**KATIE SOMMER**

katie.sommer@jll.com  
+44 (0)7703 608 316



**PHILIP HOBLEY**

philip.hobley@knightfrank.com  
+44 (0)7836 203 099

**DAN GAUNT**

dan.gaunt@knightfrank.com  
+44 (0)7818 008 981

**JONNY LEE**

jonny.lee@knightfrank.com  
+44 (0)7885 389 426

**ROB MACNAB**

rob.macnab@knightfrank.com  
+44 (0)7905 300 160

This proposal is believed to be correct at the date of publication but its accuracy is in no way guaranteed, neither does it form part of any contract. You should take all appropriate professional advice including premises details and financial/rental information. All areas, measurements and dimensions are approximate. CGI renders shown are for illustrative purposes only. Issued Q2 2024.